

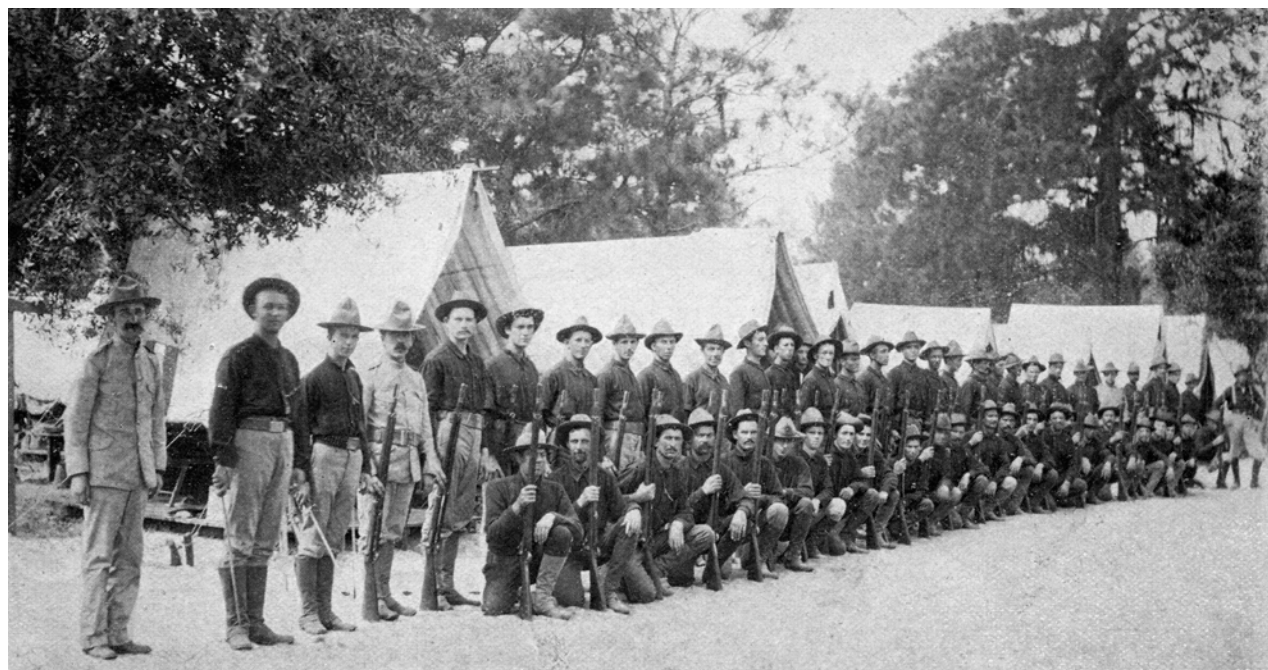


The Genealogical Record

Published by

The Houston Genealogical Forum

P.O. Box 271466 ♦ Houston, TX 77277-1466



Volume LIV (54)

Spring 2012

Numbers 1 & 2

The Houston Genealogical Forum

P.O. Box 271466 Houston, TX 77277-1466 www.hgftx.org

Publication Submissions: The Houston Genealogical Forum will publish primary or secondary genealogical information with adequate source documentation. Priority will be given to material related to Houston, Texas and the surrounding area. Send all such material to the attention of the Editor, P.O. Box 271466, Houston, Texas, 77277-1466, or, preferably, by e-mail to a member of the publications staff. Printing of these contributions will occur as space and balance of subject matter allows.

Membership fees are US\$18 per year (January to December) for one person/one copy of *The Genealogical Record* and US\$25 per year for two persons/one copy of *The Genealogical Record*. Members living outside the United States add US\$10 for additional mailing costs. Send payment to the attention of: Membership, P.O. Box 271466, Houston, Texas, 77277-1466.

Meetings are held September through May on the first Saturday of the month, unless otherwise announced, at the Bayland Park Community Center (6400 Bissonnet, Houston, Texas, 713-541-9951) from 9:30 a.m. until 12 noon. Visitors are welcome. The Houston Genealogical Forum *Genealine* voice mail is 713-968-9750.

Officers (May 2010 - May 2011)

President Robert de Berardinis <r-e-deb@sbcglobal.net> 713-523-1923
1st Vice President Mary McGuire <mstxmac@yahoo.com> 713-777-9602
2nd Vice President Virginia "Ginny" Schweitzer Douglas <gsdoug@aol.com> 281-384-8294
Recording Secretary Diane South Lee <dlee2@houstonisd.org> 281-795-7031
Corresponding Secretary Marje Harris <marje@marjeharris.com> 713-666-8362
Treasurer Linda Hobbs <lhobbsn99@aol.com> 713-304-2028
Archivist Leslie Conrads <conradsfamily@gmail.com> 832-519-9401
Director Gloria LaVonne Wright Russell <oranwr@hal-pc.org> 713-988-7095
Director Margaret Roberts Roberson <mroberson467@yahoo.com> 713-464-6035
Director Ex-officio Past President (non-voting) Marjorie Johnson Lowe <hunter@hal-pc.org> 713-827-7870
Parliamentarian (non-voting) Louise Harbour Wing <luwing@sbcglobal.net> 713-782-1513

Committee Chairmen

Audit Lee Gaskill
Bus Trips Alexander "Sandy" Scott
Hospitality Gay Dowdy
Media Gloria LaVonne Wright Russell
Memorial Donations Alexander "Sandy" Scott
Publicity Margaret Roberts Roberson
Web Curator Gloria LaVonne Wright Russell
Genealine (713-968-9750) Karen Wilk

Publications Staff for *The Genealogical Record*

Managing Editor Leslie Conrads <conradsfamily@gmail.com> 832-519-9401
Committee Members Cliff Hayes, Joyce Wallace

Editorial Policies: Material for publication in *The Genealogical Record* is solicited from members and non-members. All material submitted for publication must be fully documented. The Forum reserves the right to accept or reject any material submitted for publication and to edit as deemed necessary. Submit material to *The Genealogical Record* at the above address or by emailing to the editor at editor@hgftx.org. For mail submissions include a self-addressed stamped envelope for any material to be returned. Neither the Forum nor the publications staff assumes responsibility for errors of fact or opinion made by contributors or for the publication rights of material submitted by contributors, although every effort will be made to present correct information and to observe copyright rules and laws.

Advertising Rates: Quoted upon request. Contact the editor at email: editor@hgftx.org.

Subscription Rates: US\$10 per issue. Payment is due with order. Distribution is primarily by bulk mail. Recipients are responsible for keeping addresses current with the Membership Committee. *The Genealogical Record* is indexed for subject matter in the *Periodical Source Index (PERSI)*, which is accessible at Heritage Quest. © 2009 The Houston Genealogical Forum. ISSN 0433-3209.

Cover Picture: Company A of the Houston Light Guards First Regiment Texas Volunteer Army. See related article beginning on page 17. Photo courtesy of Ann Dunphy Becker.

The Genealogical Record

Volume LIV (54)

Spring 2012

Numbers 1 & 2

TABLE OF CONTENTS

President's Message	2
Message from the Officers and Directors	3
Upcoming Events	6
Financing the Civil War and Reconstruction	7
The International Association of Storykeepers	10
Civil War Tax Assessments	11
Houston Light Guards	17
Stephen Fuller Austin and the Austin Colony	22
Louisiana Colonial Records Project	28
An Unlikely Genealogical Resource	55
Bible Records of the Dunham Bible Museum	
The Hammond Family Bible	58
The Van Dyke/Voorhies Family Bible	65
The Voorhies Family Bible	66
The Bennett Family Bible	68
The Cranston Family Bible	70
The Crake Family Bible	71
The Selah Family Bible	72
The Norris Family Bible	73
The Cooper Family Bible	74
The Stryker Family Bible	76
The Glover/Tomlinson Family Bible	78
The More Family Bible	79
The Hearn Family Bible	80
The Dixon/Johns Family Bible	82
The Wilson Family Bible	84
In Memorium	87
Names Index	88



The President's Message

By Robert de Berardinis

As we pass through Mardi Gras and enter Lent, it is the time of year when HGF begins to elect its officers and directors for the next year. It is important to the continued vitality of this fifty-four year organization that as many members as possible spend some time as an officer or director. Although some may liken this to jury duty, it is not. With HGF, you don't have to listen to judges and lawyers wax eloquent until your ear drums burst and your brain turns to melted butter. At the March 3, 2012 meeting, the election of the nominating committee will take place. The nominating committee sorts the positions and finds qualified people to serve (except for this year's president). If interested please contact Ginny Douglas or Marilyn Henley about serving on the nominating committee. If interested in serving as an officer or director, also contact them. The elected positions available are:

President
1st Vice-President, Programs
2nd Vice-President, Membership
Recording Secretary
Corresponding Secretary
Treasurer
Webmaster
Director
Director

There are other ways to help in the smooth running of your group. Editor of the *Record*, the HGF publication, is one. Helping with the review of our financial books, selling the donated publications, or even working with the existing officers in their duties are all available. Believe me, I will thank you as will the other members

To that end, I really would like to thank the people who have brought and will continue to bring snacks and help at the meetings, not necessarily in that order. If you would like to bring snacks, please contact Gay Dowdy, Boss of Snacks, or Pat Philips, Deputy Boss of Snacks. If you are really good at baking or delicious, fat-filled *hors d'œuvres*, I especially encourage you to participate. If you are good at grocery or deli shopping, I also encourage you to participate. On the subject of volunteering to help at meetings, if this seems to be a good idea to you, please contact our new Sultan of Volunteers, Ginny Douglas.

In closing, again a really big thank you to all of the people who brought snacks, donated books, paid their dues, donated money, went on the bus trips, and otherwise help support this organization. Having been a member since 1995 when my beautiful and highly intelligent cousin Maureen Singleton was president, I am lucky that people will take their time and money to help continue this group in being successful.

Message from the Officers and Directors

On January 30, 2011, the 2010-2011 HGF Board, under the direction of President Marjorie Lowe, was informed of an offer from the National Archives that valuable microfilm was being made available free to non-profit organizations who would pay for the shipping and handling costs involved. We also had been informed by Diane LeBlanc of NARA that the requests would be time and date stamped as received, that timeliness of the requests would be part of the decision process, and there were no guarantees as to what an organization might receive.

Acting quickly, and after a thorough search of what was already available at Clayton including some rolls that needed to be replaced, we submitted our request to NARA on February 2. Our intention was that any rolls we received would be donated to the Clayton Library to add even more valuable resources to Clayton Library's microfilm collection.

During the summer, HGF was fortunate to receive 6300+ rolls which, as previously mentioned, it intended to donate to Clayton. Unfortunately, HGF was informed in a meeting with Clayton's manager that they do not plan to accept the entire collection, instead choosing only about 180+ rolls.

At present the current 2011-2012 HGF board is exploring with other local repositories who might be interested in accepting the entire microfilm collection.

Beginning below you will see a complete list of the microfilm HGF has received. It is our hope to have a resolution to this unexpected dilemma shortly. When the final location is determined, we will inform our membership so they can enjoy access to this microfilm. In the event we cannot locate one home for this valuable collection of NARA microfilm, we hope to be able to accommodate as many specific repository requests as possible, including that of Clayton. We will continue to keep the membership updated.

The following is a list of the microfilm HGF has received from the National Archives:

- A3376 (9 rolls)** *Passenger Lists of Vessels (Jan 1949–Mar. 1957) and Passenger and Crew Lists of Airplanes, June 1947–March 1957, Departing from Seattle and Tacoma, Washington*
- A3384 (1 roll)** *Crew Lists of Vessels Arriving at Two Harbors, Minnesota, August 1929–October 1956*
- A3386 (3 rolls)** *Manifests of Alien and Citizen Arrivals at Babb, Montana, June 1928–October 1956*
- A3392 (18 rolls)** *Passenger Lists of Airplane Departing from Honolulu, Hawaii, January 27, 1942–July 1, 1948*
- A3399 (8 rolls)** *Crew Lists of Vessels Arriving Milwaukee, Wisconsin, August 1922–December 1956, and Records of Selected Airplane Passengers, 1956–1963*
- A3400 (2 rolls)** *Manifests of Alien Arrivals International Falls, Baudette, Duluth, Mineral Center, Pigeon River, Pine Creek, Roseau, and Warroad, Minnesota, January 1907–December 1952*
- A3402 (8 rolls)** *Manifests of Alien Arrivals at Newport, Vermont, ca. 1906–June 1924*
- A3403 (14 rolls)** *Manifests of Alien and Selected U.S. Citizen Arrivals at Anacortes, Danville, Ferry, Laurier, Lynden, Marcus, Metaline Falls, Northport, Oroville, Port Angeles, and Sumas, Washington, May 1917–Nov. 1956*
- A3407 (19 rolls)** *Index to Filipino Passengers Arriving at Honolulu, Hawaii, ca. 190–ca.1952*
- A3409 (2 rolls)** *Passenger and Crew Lists of Vessels Arriving at (1948–1972) and Departing from (1960–1968) Ogdensburg, New York*
- A3410 (37 rolls)** *Index to Passengers, Not Including Filipinos, Arriving at Honolulu, Hawaii, ca. 1900–ca. 1952*
- A3411 (1 roll)** *Index to Filipino Contract Laborers and Their Wives and Children Arriving at Honolulu, Hawaii, 1946*
- A3420 (15 rolls)** *Crew Lists of Vessels Arriving at Sodus Point, New York, 1945–1957*
- A3425 (21 rolls)** *Passenger and Crew Lists of Vessels Arriving at Buffalo, Lackawanna, and North Tonawanda, New York, 1945–1972*
- A3426 (15 rolls)** *Passenger Lists, 1962–1972, and Crew Lists, 1943–1972, of Vessels Arriving at Oswego, New York*

- A3449 (1 roll)** *Crew Lists of Vessels Arriving at Rouses Point and Waddington, New York, 1954–1956*
- M8 (1 roll)** *Records of the Bureau of Land Management Journal and Report of James Leander Cathcart and James Hilton, Agents Appointed by the Sec. of the Navy to survey Timber resources between the Meementau & Mobile Rivers 1819–19*
- M9 (17 rolls)** *General Records of the Dept. of State Consular Dispatches Dept. of State, Cap Haïtien, Haiti, 1797–1906*
- M10 (52 rolls)** *Dept. of State: Diplomatic Dispatches, Chile, 1823–1906*
- M14 (10 rolls)** *Records of the Foreign Service Posts of the Dept. of State, Records of U.S. Legations and Embassies, France, 1835–1842*
- M17 (71 rolls)** *Registers of Correspondence of the Department of State, 1870–1906*
- M30 (200 rolls)** *Dept. of State: Diplomatic Dispatches, Great Britain, 1791–1906*
- M31 (134 rolls)** *Dept. of State: Diplomatic Dispatches, Spain, 1792–1906*
- M39 (12 rolls)** *General Records of the Dept. of State: Notes from Foreign Legations, Russia, 1809–1906*
- M40 (171 rolls)** *Domestic Letters of the Department of State, 1784–1906*
- M43 (41 rolls)** *Dept. of State: Diplomatic Dispatches, Portugal, 1790–1906*
- M44 (107 rolls)** *Dept. of State: Diplomatic Dispatches, German States & Germany, 1799–1906*
- M50 (145 rolls)** *Notes from British Legation in the U.S. to the Dept. of State 1791–1906*
- M52 (9 rolls)** *Notes from Danish Legation in the U.S. to the Dept. of State 1801–1906*
- M53 (32 rolls)** *General Records of the State Dept.: Notes from the French Legation, 1789–1906*
- M54 (39 rolls)** *Notes from the Mexican Legation in the U.S. to Dept. of State, 1821–1906*
- M55 (2 rolls)** *General Records of the Dept. of State: Notes from Foreign Legations, Two Sicilies, 1826–1860*
- M56 (13 rolls)** *General Records of the Dept. of State: Notes from Foreign Legations, Netherlands, 1784–1906*
- M57 (8 rolls)** *General Records of the Dept. of State: Notes from Foreign Legation, Portugal, 1796–1906*
- M58 (32 rolls)** *General Records of the Dept. of State: Notes from Foreign Legation, German, 1817–1906*
- M59 (31 rolls)** *Notes from Spanish Legation in the U.S. to the Dept. of State, 1790–1906*
- M60 (9 rolls)** *General Records of State Department: Notes from Foreign Legation Sweden*
- M66 (37 rolls)** *Letters Sent by Topographical Bureau & Succession Division*
- M123 (116 rolls)** [Rolls #41–43 of New Jersey are unavailable] *Schedules Enumerating Union Veterans and Widows of Union Veterans of the Civil War*
- M202 (18 rolls)** *Italy: Notes from the Foreign Legation*
- M248 (31 rolls)** *Publications of the National Archives, 1935–1968*
- M334 (188 rolls)** *Supplemental Index to Passenger Lists of Vessels Arriving at Atlantic and Gulf Coast Ports (Excluding New York), 1820–1874*
- M491 (4 rolls)** *Register of Letters Received by the Secretary of War, Irregular Series, 1861–1866*
- M492 (36 rolls)** *Letters Received by the Secretary of War, Irregular Series, 1861–1866*
- M623 (21 rolls)** *Records of the Geological and Geographical Survey of the Territories ("Hayden Survey"), 1867–1879*
- M816 (27 rolls)** *Registers of Signatures of Depositors in Branches of the Freedman's Savings and Trust Company, 1865–1874*
- M881 (1096 rolls)** *Compiled Service Records of Soldiers Who Served in the American Army During the Revolutionary War*
- M928 (9 rolls)** *Prize and Related Records for the War of 1812 of the U.S. District Court for the Southern District of New York, 1812–1816*

- M1461 (400 rolls)** *(Soundex) Index to Canadian Board Entries through St. Albans, Vermont District, 1895–1924*
- M1462 (6 rolls)** *Alphabetical Index to Canadian Border Entries through Small Ports in Vermont, 1865–1925*
- M1463 (98 rolls)** *Index (Soundex) to Entries into the St. Albans, VT District through Canadian Pacific and Atlantic Ports, 1924–1952*
- M1464 (640 rolls)** *Manifests of Passengers Arriving in the ST. Albans VT District through Canadian Pacific and Atlantic Ports, 1895–1954*
- M1465 (25 rolls)** *Manifests of Passengers Arriving in the St. Albans, VT District through Canadian Pacific Ports, 1929–1949*
- M1480 (165 rolls)** *Manifests of Alien Arrivals at Buffalo, Lewiston, Niagara Falls, and Rochester, New York, 1902–1954*
- M1481 (3 rolls)** *Alphabetical Card Manifests of Alien Arrivals at Alexandria Bay, Cape Vincent, Champlain, Clayton, Ft. Covington, Mooers, Rouses Point, Thousand, Thousand Island Bridge, and Trout River, New York, July 1929–April 1956*
- M1482 (3 rolls)** *Sound Card Manifests of Alien and Citizen Arrivals at Hogansburg, Malone, Morristown, Nyawdo, Ogdensburg, Rooseveltown, and Waddington, New York, July 1929–April 1956*
- M1861 (13 rolls)** *Certificates of Enrollment Issued for Merchant Vessels at Buffalo, New York, 1816–1896*
- M1874 (1 roll)** *Non-population Census Schedules for American Samoa, 1930, Agriculture*
- M1962 (72 rolls)** *World War II Draft Cards for the State of Connecticut*
- M2004 (39 rolls)** *Compiled Military Service Records of Union Soldiers Who Served with the 1st New York Volunteer Engineers*
- M2081 (47 rolls)** *Indexes to Naturalizations Petitions for United States District Courts, Connecticut, 1851–1992*
- M2095 (1 roll)** *Lists of Passengers Arriving at and Departing from the District of Fairfield, Connecticut, 1804–1889*
- M2102 (1 roll)** *Letters Sent and Registers Received by the Secretary of the Treasury Relating to Immigration Matters*
- T132 (13 rolls)** *Minnesota Census Schedules for 1870*
- T160 (4 rolls)** *Notes from the Foreign Legation: Hawaii*
- T458 (31 rolls)** *Subject Index to Correspondence and Case Files of the Immigration and Naturalization Service, 1903–1952*
- T498 (3 rolls)** *Publications of the Bureau of the Census: 1790 Census, Printed Schedules*
- T517 (26 rolls)** *Index to Passenger Lists of Vessels Arriving at Ports in Alabama, Florida, Georgia, and South Carolina, 1890–1924*
- T521 (11 rolls)** *Index to Passenger Lists of Vessels Arriving at Boston, Massachusetts, Jan 1, 1902–June 30, 1906*
- T733 (9 rolls)** *Guide to German Records Microfilmed at Alexandria*
- T1219 (3 rolls)** *State Department Transcripts of Passenger Lists, ca. October 1819–ca. December 1832*
- M1987 (380 rolls)** *World War II 4th Registration Draft Cards, New York, 1942*
- M265 (282 rolls)** *Index to Passenger Lists of Vessels Arriving at Boston, Massachusetts, 1848–1891*
- M277 (115 rolls)** *Passenger Lists of Vessels Arriving at Boston, Massachusetts, 1820–1891*
- M551 (157 rolls)** *Index to Compiled Service Records of Volunteer Union Soldiers Who Served in Organizations from the State of New York*
- M575 (16 rolls)** *Copies of Lists of Passengers Arriving at Miscellaneous Ports on the Atlantic and Gulf Coasts and at Ports on the Great Lakes, 1820–1873*
- T612 (807 rolls)** *Book Indexes, New York Passenger Lists, 1906–1942*
- T718 (23 rolls)** *Ledgers of Payments, 1818–1872, to U.S. Pensioners under Acts of 1818 through 1858 from Records of the Office of the Third Auditor of the Treasury, 1818–1872*

Names Index

- A**
ACKER
 Frances, 61
ALEXANDER
 Cameron, 87
 Ethan, 87
 J., 11
 Matthew, 87
 Melissa, 87
ALLCORN
 Elijah, 26
ALLEN
 Martin, 26
ALLEY
 John C., 26
 Rawson, 26
 Thomas V., 26
 William A., 26
ALSBURY
 Charles Grundison, 26
 Dr. Horace Arlington,
 26
 James Harvey, 26
 Thomas Jr., 26
ALYEA
 Thomas Tubbs, 11
ANDERSON
 M. D., 11
 Simeon Asa, 26
ANDREWS
 John, 26
 William, 26
ANGERMAN
 Eleanor R., 66
ANGIER
 Samuel T., 26
ARMOUR
 Ad. Capt. Flector, 58
ATKINSON, 11
 J., 9
 W., 11
AUSTIN
 James Elijah Brown,
 26
 John, 26
 Mary Brown, 22
 Moses, 22
 Stephen F., 22
 Stephen Fuller, 22, 26
AYCOCK, 11
- B**
BABER
 Thomas A., 11
BAILEY
 James Briton, 26
BAKER
 James A., 20
 John, 11
 M. W., 11
BALDRIDGE, 11
 J., 11
- BALIS**
 Daniel E., 26
BARMORE
 Aaron, 87
 Camille Faver, 87
 Clifford W., 87
 Debbie, 87
 Gaston C., 87
 Tracy, 87
BARRETT
 William, 26
 Thomas, 26
BATTLE
 Mills M., 26
BARZIZA
 D. U., 18
BASSETT
 B. H., 11
 J., 11
BAUGH
 J. T., 85
BEARD
 James, 26
BEASON
 Benjamin, 26
BECKER
 Alyse, 84
 Ann Dunphy, 17
BELKNAP
 Charles, 26
BELL
 Josiah Hughes, 26
 Thomas B., 26
BENNETT
 Anna Maria, 68
 Catharine, 66, 68
 Charles, 68
 Clara, 68, 69
 Cornelius V., 68
 Cornelius W., 67
 Ellen Aletta, 68, 69
 Ellen H., 68, 69
 Elmer Emmons, 68
 Jaques, 68, 69
 James B., 68
 Jennie A., 69
 John, 68
 Roy, 69
 Sarah Elizabeth Van
 Cleef, 67
 William, 68, 69
 Winant, 68, 69
BERRY
 Manders, 26
BEST
 Isaac, 26
BETTS
 Jacob, 26
BILLINGSLEA
 W. H., 11
BINGHAM
 Frances, 26
BLAKE
 Alan, 20
BLANTON
 B., 11
BLOODGOOD
 William, 26
BOATWRIGHT
 Thomas, 26
BORDEN
 Thomas Henry, 26
BOSTIC
 Caleb R., 26
BOWMAN
 John T., 26
BOZARTH
 Stephen, 11
BRADLEY
 Edward R., 26
 John, 26
 Thomas, 26
BREEDLOVE, 11
 C. R., 11
BREEN
 Charles, 26
BRIDGES
 William B., 26
BRIGHT
 David, 26
BRINSON
 Enoch, 26
BROTHERTON
 Robert, 26
BROWN, 11
 George, 26
 J. M., 11
 John, 26
 William S., 26
BROWNING
 W. W., 11
BRUNWINKLE
 William, 9
BRYAN
 Emily, 22
 M. Austin, 11
BUCHANAN, 11
BUCKNER
 Aylett C., 26
BUILDING
 William, 11
BUNKER
 Albon, 57
 Edwin, 57
 Lois, 57
 Rev. Valentine E., 57
BUNN
 Lara, 87
 Matthew, 87
BURKE
 Mayor A. J., 20
 Fannie, 20
BURLEY
 James, 73
 Revina, 73
BURNAM
 Jesse, 26
BURNET
 David G., 26
 Pumphrey, 26
BURROUGHS
 Mrs. M., 11
BUSSE
 F., 11
BYRD
 Micajah, 26
- C**
CALVIT
 Alexander, 26
CALLIHAN
 Moses (Morris) A., 26
CAMPBELL
 J. B., 11
CANNON, 11
CARLISLE
 Tara, 6
CARNES
 P. E., 11
CARPENTER
 David, 26
CARSON
 William C., 26
CARTER
 Charles, 61
 Lucy Carroll Hudson,
 61
 Samuel C., 26
 T. P., 61
CARTNELL, 15
CARTWRIGHT
 Jesse H., 26
 Thomas, 26
CASTLEMAN
 Sylvanus, 26
CATHCART
 James Leander, 4
CHADWICK, 12
CHANCE
 Samuel, 26
CHAPPELL, 11
 E. M., 11
CHARLEY
 Warner Hellen, 86
CHASE
 Lydia, 73
CHILDRESS
 William, 19, 20
CHITTENDEN
 Thomas, 56
CHRISMAN
 Horatio, 26
CLAMPETT
 N. A., 11
CLARK, 11, 16
 John C., 26
CLARKE
 Anthony R., 26
 Eunice Aletta, 69
 Milton H., 69
 P., 69
 Percy, 69
 Robert, 65, 66, 68
CLAY, 11
 Henry, 56
 T. C., 11
 T. T., 11
CLEMENS
 Gladys, 83
 Luther, 83
 Robert, 83
 Thurman, 83
COATS
 Merit M., 26
COBB
 Henry, 63
 Dr. J. L., 63
 Julia F., 63
 Russell, 63
 Sadie, 63
 Thomas, 63
 Virginia, 63
COLES
 John P., 26
COLLINS
 J. M., 11
COLQUITT
 Gov., 19
COMPTON
 Brothers, 11
CONNOLLY
 M. C., 12
CONRADS
 Leslie, 22, 55
COOK, 12
 James, 26
COOPER
 Andrew J., 74
 C. H., 12
 Charlotte, 74, 75
 Elizabeth Catharine,
 74
 David H., 74
 General H., 74
 Henry T., 74
 Hester, 75
 Hugh, 74
 Jacob T., 74, 75
 James, 74, 75
 John, 74
 Joseph, 74, 75
 Joseph A., 74, 75
 Mary J., 74, 75
 Oliver T., 74
 Reubin R., 74, 75
 Richard H., 74
 Sarah, 74
 Squire H., 74
 Thomas C., 74, 75
 William, 75
 William Cow, 26
 William P., 74, 75

William R., 74
William Sawmill, 26
CRAKE
Agnes, 71
Clara, 71
Edith, 71
Edmund, 71
Edmund Fisher, 71
Elizabeth, 71
James Johnson, 71
Lelia, 71
Sarah Maria, 71
CRANSTON
Ann, 70
Benjamin, 70
Eliza, 70
James, 70
Joseph, 70
Mary, 70
Mary Ann, 70
Samuel, 70
Sarah, 70
Simon, 70
William, 70
CRIER
John, 26
CROWNOVER
John, 26
CROZIER, 12
CRUMPLER
Mrs. M. E., 12
CUMINGS
James, 26
John, 26
Rebekah, 26
Tim, 27
William, 26
CURE, 11
CURRY
B. P., 12
CURTIS
Hinton, 26
James Sr., 26
James Jr., 26
CURTISS
Esther, 56
Lois, 56
Stephen, 56

D

DAILEY
H. H., 12
DAGLY
Mary, 75
DALLAS
H. H., 12
DAVIDSON
Samuel, 26
DAVIS
Thomas, 26
DAVIES
Harriet P., 64
DAWSON
F. W., 12
DE BERARDINIS
Robert, 2, 28

DECROW
Daniel, 26
DEEBEN
John P., 7, 11
DEMOSS
Charles, 26
Peter, 26
DEUMAN, 12
W. J., 12
DEVENPORT
Charly, 85
DEWEES
William B., 26
DICKIE, 16
DICKINSON
John R., 26
DILLARD
J. B., 12
Nicholas, 26
DILLER
P., 12
DIXON
Agnes, 82
Ellen, 82
James, 82
John, 82, 83
Lily Maud, 82
Margaret, 82, 83
Mary Agnes, 82
DOBYNS
Caty, 60
Eliza., 58
DONNELL
Cordelia, 81
J. M., 80
L. S., 80
DOUGLAS
Ginny, 2
DOWDY
Gay, 2
DRAKE
Bev., 12
DUKE
Thomas Marshall, 26
DUNLAP
S. M., 12
DUNPHY
Ann, 17
DUNN
W. B., 12
DUTY
George, 26
Joseph, 26
DYER
Clement C., 26
E
EARLE
Thomas, 26
EDDIUS, 12
J. S., 12
EDWARDS
Gustavus E., 26
ELAM
John, 26
ELDER
Robert, 26

ELDRIDGE
J. C., 12
EMMONS
Jana Ann, 68
Stanley, 69
EVE
Mrs. W. R., 64
EWING
E. F., 12
J., 12
John, 12
Theresa Meigs, 85, 86

F

FALENASH
Charles, 26
FARQUHAR
J. L., 12
FAVER
Camille, 87
Thomas Jay, 87
Rhea Lavender, 87
Richard D., 87
FELDER
A.F., 12
J. G., 12
J. J., 12
P. S., 12
FENTON
David, 26
FIELDS
John, F., 26
FILMORE
President Millard, 56
FINN
Alfred C., 21
FINNEY
E. C., 12
FISHER
G. W., 86
James, 26
FITZGERALD
David, 26
FLANAKIN
Isaiah, 26
FLOWERS
Elisha, 26
FORD
W. G., 12
FOSTER
Randolf, 26
FOSTERS
Isaac, 26
John, 26
FRANKLIN
J. R., 12
FRAZIER
James, 26
FULSHEAR
Benjamin, 26
Churchill Sr., 26
Churchill, 26
Graves, 26

G

GAHRMAN, 14

GANS, 15
GARRETT
Charles, 26
L., 11
O. H. P., 11
GATES
Samuel, 26
William, 26
GAUTT
W. H., 11
GAVITO
Dan, 87
Georgia, 87
Sherry, 87
GEE
Alfred, 12
GENGE
J. F., 12
GENTRY, 12
T. N., 12
GEISECKE
G. F., 13
GIDDINGS
D. C., 13
J. D., 13
GILBERT
Freeman George
Preston, 26
Sarah, 26
GILDER
A.J., 13
GILLELAND
Daniel, 26
GLOVER
Franklin E., 78
Katherine C., 78
Mary Jane, 78
Myron Daniel, 78
Richard M., 78
William Haywood, 78
GORBET
Chester Spalding, 26
GORDON
Sally, 73
GOULDRICH
Michael, 26
GRAVES
G. W., 13
GRAY
Edwin Fairfax, 17, 18
Mr., 56
Thomas, 26
GREGG
Jas., 64
GROCE
Jared Ellison, 26
GULICK
J. W., 13
GUTHRIE
Robert, 26
H
HABLE
J. W., 13
HADDON
John, 26
HADY

Samuel C., 26
HAIREMAN
Gertrude, 76
HALBURT
L. N., 13
HALL
George, E., 26
John W., 26
William, 79
William J., 26
HAMILTON
David, 26
HAMMOND
A.A., 13
A.W., 64
Abner, 60
Abner L., 63
Alfred, 62
Alfred H., 61
Americus W., 61
Amos W., 61, 62
Ann Eliza, 61, 63
Ann S., 64
A.W., 61
Betty, 59, 60
Betty Hill, 61
C. C., 61, 62
Catherine, 64
Caty, 59, 60
Charles, 58, 59, 60,
61, 63
Charles D., 64
Charles J., 64
Christophe T., 64
Daniel, 59, 61
Dudley, 62
Dudley W., 62
E. Spann., 64
Edwin Gaston, 61
Edwin W., 61
Eliza C. Hudson, 64
Elizabeth, 59, 60, 62,
63, 64
Elizabeth Louise, 61,
63
Ella, 61
Ellen, 63
Epaphiroditus, 60
Fannie, 62
Frances, 62
George, 60
George H., 61
Harriet Narcissi, 62
Herbert, 62
J. Harry, 64
J. Howard, 62
James H., 64
James Henry, 64
Job, 62
John, 59, 60, 61, 63
John A., 62
Josie, 62
Julia F., 63
Julia T., 61
Kate B., 64
Katherine, 61, 63
Katherine Bailey, 61

Leroy, 59, 61, 63
 Loullah, 61
 Lucy, 62
 Lucy E., 61
 M. C. M., 64
 Marcus C., 64
 Mary Ann., 63
 Mary C., 61, 62
 Mary Elizabeth, 62
 Mary Washington, 61
 Nathaniel J., 61
 Nathaniel Job, 64
 Paul F., 64
 Samuel, 60, 62, 63
 Samuel Jenkins, 62
 Sarah, 60
 Susan E., 61, 63
 Theodore A., 61
 Theresa C., 62
 Theresa Caroline, 61
 Thomas T., 64
 Victoria A., 61
 William, 61, 62
 William Alfred, 61
 William C., 64
 William G., 64
 William H., 61, 62
 William Pinkney, 62
 Winnefrid, 59, 61
HARDEN
 J. D., 13
HARDY
 Lily, 79
HARKEROAD
 F., 13
HARPER
 Maynard R., 85
 Sallie Thresa, 85
HARMINN
 M., 55
HARRIS
 Abner, 26
 David, 26
 John Richardson, 26
 S. W., 13
 William, 26
 William J., 26
HARRISON
 George, 26
HART
 Jno. M., 85
HARVEY
 William, 26
HATFIELD
 Mrs. A. E., 13
HAYDEN
 C. H., 56
HAYNES
 D. R., 13
 Thomas S., 26
HEALY
 M. A., 13
HEARD
 J. G., 13
HEARN
 Annie Lee, 80, 81
 Cordelia, 80, 81
 Grace W., 80, 81
 Jesse E., 80
 Josie M., 81
 Lattie Ula, 80
 Lulu, 80
 Lulu Pauline, 80
 Marvin B., 80
 Mary J., 80, 81
 Rachel E., 80, 81
 Vera Maude, 80, 81
 W. A., 81
 William Anderson, 80
 Willie Hayes, 80, 81
HELLMAN
 H., 13
HENDERSON
 T. S., 13
HENDRICKSON
 Ellen Haviland, 68, 69
HENLEY
 Marilyn, 2
HENNO
 H. H., 13
HENSLEY
 James, 26
HEWITT
 William, 13
HILL
 Nora, 87
 William K., 87
HILTON
 James, 4
HINES
 James R., 13
HIRSHBURG
 George, 13
HODGE
 Alexander, 26
HODGES
 James Homer, 80
HOFFMAN
 R., 13
HOGAN
 F. V., 13
HOLLAND
 Francis, 26
 William, 26
HONS BURTON, 13
HOOK
 Jacob, 73
 John S., 73
 Sally, 73
HOPE
 James, 26
HORTON
 G. W., 13
HOSEA
 S. S., 13
HOWARD
 Lucy, 61, 62
HUBBARD
 Ann, 76
HUDSON
 Charles S., 26
 Eliza C., 61, 64
 Lucy Carroll, 61
HUFF
 George, 26
HUGHES
 O' Brian S., 13
HUMPHREYS, 11
HUNTER
 Eli, 26
 Johnson Calhoun, 26
 Thomas L., 9
HURT
 I.S., 13
HUTCHISON
 Rev. Dr., 85
HUTCHINSON
 B. B., 13
HUTSON
 Sarah, 75
HYDE
 Mr., 56
I
IAUKES
 G. A., 13
IGLAHASH
 Emma Jane, 84
IGLEHAT
 Emma Jane, 85
IIAMS
 John Sr., 26
INGRAM
 Ira, 26
IRONS
 John, 26
ISAACKS
 Samuel, 26
J
JACKSON, 13
 Alexander, 26
 Humphrey, 26
 Isaac, 26
 T. J., 13
JAMISON
 Thomas, 26
JENKINS
 Mrs. Ann Williams, 62
JOHNS
 Eunice, 82
 Florence, 82
 Florence Doreen, 83
 June, 82
 Mary A., 82
 Thomas R., 82
JOHNSON
 Elanor, 62
 Henry B., 17
 Henry W., 26
 Mary A., 70
JONES, 11
 Carrie, 63
 H. B., 13
 Henry, 26
 James Walles, 26
 Jn. H., 63
 Junius J., 63
 Oliver, 26
 Randall, 27
 William T., 63
JORDAN
 Nancy, 87
 Vivian Hill, 87
K
KAVANAUGH
 N., 13
KEEP
 Imla, 27
KELLER
 John, 27
KELLY
 John, 27
KENEDAY
 John, 13
KENNEDY
 Samuel, 27
KENNON
 Alfred, 27
KEPLER
 William, 9
KERR
 A.C., 13
 James, 27
 Peter, 27
 William, 27
KEY
 J. P., 13
KINCHELOE
 William, 27
KINGSTON
 William, 27
KIRKLEY
 Doreen Gay, 82
 Kenneth Leon, 82
 Thomas, 82
KIRLICKS
 John, 19
 Judge, 19
KNIGHT
 James, 27
KOCH, 14
KOLLNEY
 G. L., 14
KUYKENDALL
 Abner, 26, 27
 Barzillae, 27
 Joseph, 27
 Robert H., 27
 William, 26
L
LABAW
 Rever, Isaac, 76
LANGSTON
 Fay E., 85
LEAGUE
 Hosea H., 27
LEAKEY
 Joel, 27
LEBLANC
 Diane, 3
LEE
 Gen. Robert E., 7
LEGRANDE,

W. C., 14
 W. T., 14
LINCICUM
 Gideon, 14
LIPSCOMB
 A.E., 14
LITTLE
 John, 27
 William, 27
LOBB
 George, 67
LOCKHART
 J. W., 14
LONG
 Jane Herbert
 Wilkinson, 27
LOTT
 J. W., 14
 Mrs. S. C., 14
LOWE
 Marjorie, 3
LUMM
 M. N., 9
LUSK
 J. C., 14
LYNCH
 James, 27
 Nathaniel, 27
M
MARSH
 Mary, 70
 S., 14
 Shubael, 27
MARSHALL, 14
MARTIN
 Wylie, 27
MARTINEZ
 Gov. Antonio Maria,
 22
MATHEWS
 J., 14
MATHIS
 William, 27
MATSON
 J. W., 14
MATTHEWS
 William, 27
MCADOO
 J. D., 14
MCALPINE
 W. K., 14
MCBRIDE
 M., 14
MCCARTNEY
 W. W., 14
MCCLELLAN
 Maj.Gen. George B., 9
MCCORMICK
 Arthur, 27
 Captain, 20
 David, 27
 John, 27
MCCOY
 Thomas, 27
 W. E., 64

MCCLAIN
 A.W., 27
 MCCREARY
 A.J., 14
 MCCROCKLIN, 14
 MCCROSKEY
 John, 27
 MCFARLAN
 John, 27
 MCFARLAND, 14
 Achilles, 27
 MCGARY
 D. L., 14
 MCKINNEY
 C. B., 14
 Thomas, 27
 MCKINSEY
 Hugh, 27
 MCKNIGHT
 L., 14
 MCNAIR
 James, 27
 MCNEEL
 Daniel, 27
 George, 27
 John, 27
 Pleasant D., 27
 Sterling, 27
 MCNEESE
 D., 14
 MCNUTT
 Elizabeth, 27
 MCWILLIAMS
 William, 27
 MEREDITH
 B. C., 14
 R. C., 14
 MILLBURN
 David, 27
 MILLER
 Samuel R., 27
 Simon, 27
 MILLICAN
 James D., 27
 Robert, 27
 William T., 27
 MIMS
 Charles M., 85
 Helen, 84
 Joseph, 27
 MINER
 J. L., 14
 MITCHELL
 Asa, 27
 MONROE, 11
 MONTGOMERY
 W. A., 14
 MOORE
 J. R., 14
 John Henry Sr., 27
 Luke, 27
 MORE
 Alexander, 79
 Andrew, 79
 Lillie, 79
 Lily, 79
 Margaret, 79
 Mary, 79
 Peter, 79
 Robert, 79
 MORRIS
 T. W., 14
 MORRISON
 Moses, 27
 MORTON
 William, 27
 MOSES, 12
 MOUSER
 David, 27
 MULLINS
 J. J., 14
 MUSE
 William, 14
N
 NELSON
 James, 27
 NEUGERAN, 12
 NEWMAN
 Joseph, 27
 NIDEVER
 Charles Isaac, 27
 NORRIS
 Dudley, 73
 Josiah, 73
 Josiah R., 73
 J. T., 14
 Lydia, 73
 Mary, 73
 Nancy, 73
 NORTHINGTON
 M., 14
 NORTON
 E. H., 14
 NOTT, 14
 NUCKOLS
 Milton B., 27
 NUSSBAUM
 J., 14
O
 ONIUS
 J. M., 14
 ORRICK
 James, 27
 OSBORN
 Nathan, 27
P
 PARKS
 William, 27
 PARKER
 Joshua, 27
 William, 27
 PENNINGTON
 Isaac M., 27
 PENTECOST
 George Samuel, 27
 PERKINS
 J. P., 15
 PERRYMAN, 15
 PETTUS
 Freeman, 27
 William, 27
 PETTY
 John, 27
 PEYTON
 Johnathan C., 27
 PHAGAN
 Grace, 81
 J. R., 80
 PHELPS
 James Aeneas E., 27
 Walter A., 80
 PHILIPS
 Zeno, 27
 PHILLIPS
 Isham B., 27
 PICKET
 Pamela, 27
 POLLEY
 Joseph Henry, 27
 POWELL
 Peter, 27
 PRESLER
 J. M., 15
 PRESSLEY, 15
 PHILLIPS, 16
 Pat, 2
 William J., 8
 POWER
 William, 9
 PRUIT
 Pleasant, 27
 PRYOR
 William, 27
R
 RABB
 Andrew, 27
 John, 27
 Thomas J., 27
 William, 27
 RALEIGH
 William, 27
 RALSON
 Joe, 15
 RAMSEY
 Lawrence, 27
 RANDLE
 J. R., 15
 RANDON
 David, 27
 John, 27
 RANKIN
 Frederick Harrison, 27
 RAWLS
 Amos, 27
 Benjamin, 27
 Daniel, 27
 RED
 J. C., 15
 REDICK
 M. G., 15
 REED
 Clifton A., 62
 Cora S., 62
 Eleanor C., 62
 Emmala W. T., 62
 Julia, 62
 Lucy E., 62
 Mary E. D., 62
 Theresa C., 62
 REELS
 Patrick, 27
 RICE
 Frederick, 19
 Mayor H. B., 19
 Captain Jonas A., 19
 William Marsh, 19
 RICHARDSON
 Stephen, 27
 RIDE
 Sarah Maria, 71
 RIPTOE
 A.H., 15
 ROARK
 Elijah, 27
 ROBBINS
 Earle, 27
 William, 27
 ROBERTS
 Andrew, 27
 F. G., 15
 Mr., 55
 Noel Francis, 27
 William, 27
 ROBERTSON
 D. H., 15
 Edward, 27
 J. B., 15
 W. C., 15
 ROBICHAUX
 Al, 6, 54
 ROBINSON
 Andrew, 24, 25, 26, 27
 Andrew Jr., 26
 George, 27
 RODGERS, 15
 E. W., 15
 W. S., 15
 ROFF, 15
 ROGERS
 Rev., 85
 ROOT
 Alexander Porter, 18,
 19
 Bud, 18
 ROSS
 J. M., 15
 James J., 27
 RUTHERFORD, 11
 RUTLEDGE
 Gov., 63
 RYDER
 Maria, 65
 Sarah Jane, 76
S
 SALLIS
 D. E., 15
 SAN PIERRE
 Joseph, 27
 SAYLES
 John, 15
 SCHNIDER, 15
 SCHNUDKOPS
 W., 15
 SCHOONMAKER
 Rever., 76
 SCOBEY
 Robert, 27
 SCOTT
 Craig, 6
 James, 27
 William, 27
 SEARS
 Captain George A., 21
 SELAH
 Jane, 72
 John, 72
 Robert, 72
 SELKIRK
 William, 27
 SEOVILT
 Nancy, 73
 SESSUMS
 Captain John, 19
 SEWARD
 J. H., 15
 Samuel, 15
 SHELBY
 David, 27
 Dr. J. L., 61
 Gov., 61
 Mary, 61
 SHEPHERD
 B. A., 18, 19
 Benjamin A., 19
 Laura, 18
 SHEPPARD
 J. C., 15
 John A., 15
 SHIPMAN
 Daniel, 27
 Moses, 27
 SHURTLIFF
 D. W., 15
 SIDEL
 E., 15
 SIMONS
 H., 15
 SIMS
 Bartlett, 27
 SINGLETON
 George Washington,
 27
 Maureen, 2
 Philip, 27
 SizEMORE
 Mike, 87
 Truman G., 87
 SLEDGE
 J. M., 15
 SMITH, 15
 Ann M., 65
 Anna Maria, 67
 Christian, 27
 Cornelius, 27
 D. C., 15
 James B. Voorhies.,
 65, 66, 67
 John, 27
 Louisiana, 84, 85

M. C., 84, 85
 Robert, 66
 SMITHERS
 William, 27
 SMOTHERS
 William, 27
 SMYTH
 Elizabeth, 59
 Henery, 59
 SNIDER
 Gabriel Straw, 27
 SOJOURNER
 Albert Lloyd, 27
 SOUTERS
 M. M., 15
 SPENCER
 Nancy, 27
 SPRING
 B., 63
 STACK
 Dennis, 10
 STAFFORD
 Adam, 27
 William Joseph, 27
 STANCHFIELD
 Mrs. S. A., 15
 STEEL
 Catharine, 60
 Elizabeth, 60
 Samuel, 60
 STEVENS
 Thomas, 27
 STEVENSON
 Charles, 15
 STILES
 Josie M., 80
 STOKES
 W. E., 15
 STONE
 John H., 16
 Samuel, 16
 STONES
 Ben, 16
 STOUT
 Owen H., 27
 STRANGE
 James, 27
 STRIBBLING
 John, 16
 STRYKER
 Ann H., 77
 Ellen Ann, 76, 77
 Frances Handry
 Dubois, 76
 Henry, 76
 Jacobus, 76
 Johanna, 76
 John R., 76, 77
 Sarah Jane, 76, 77
 Samuel H., 76
 Samuel S., 76
 Samuel T., 76
 Tunis, 76, 77
 STUCKERT
 W. A., 16

SUDDITH
 R., 62
 SUTHERLAND
 Walter, 27

T
 TALLY
 David, 27
 TAYLOR
 Jas D., 78
 John D., 27
 TEEL
 George, 27
 TERRILL, 11
 TERRY, 16
 THOMAS
 B. K., 16
 Ezekiel, 27
 Jacob, 27
 THOMPSON
 H., 16
 J. H., 16
 Jesse, 27
 THORNHILL
 Samuel, 16
 TOM, 16
 TOMLINSON
 Rebecca C., 78
 Katherine C., 78
 TONE
 Thomas J., 27
 TONG
 James F., 27
 TONN
 T., 16
 TOY
 Samuel, 27
 TRAVIS
 William Barret, 26
 TRAYNHAM
 W. B., 16
 TROBOUGH
 John, 27
 TRUETT
 Jack, 87
 Michelle, 87
 TUMLINSON
 Elizabeth Plemmons,
 27
 James, 27
 TYGRET
 Bill, 87
 Brandy, 87
 Dan, 87
 Dana, 87
 Jennifer, 87
 Sam, 87

V
 VAN CLEEF
 Sarah Elizabeth, 67,
 68
 VAN DORN
 Isaac, 27

VAN DYKE
 Ann, 65
 Jane, 65
 Maria, 65
 Syche, 65
 William, 65
 VARNER
 Martin, 27
 VERISON, 11
 VINCE
 Allen, 27
 Richard, 27
 Robert, 27
 William, 27
 VOORHIES
 Ann, 67
 Ann Van Dyke, 65
 Anna M., 66
 Anna Maria, 66
 Barnades, 65, 67
 Barnades J., 65
 Catharine, 67, 69
 Catharine Bennett, 66
 Ella Louise, 66, 67, 69
 Frederick "Freddie"
 DeMund, 66, 67,
 69
 Ida, 65
 Isaac, 66
 Isaac Fun, 65
 Isaac Van Dyke, 67
 James, 65
 James B., 66, 67, 68
 Jacobus, 65
 Maria, 65
 Phebe Ann, 65
 Phoebe Ann, 67
 Robert, 65, 67
 Robert Smith, 66
 S. Isabella, 67
 William, 65, 66
 William Van Dyke, 65
 Willie, 67
 Winant B., 65, 66
 Winant Bennett, 66,
 67

W
 WADE
 James W., 9
 WALKER
 James Walker Sr., 27
 Thomas, 27
 WALLACE
 Caleb, 27
 WALSTON
 John, 16
 WALTON
 A.G., 16
 WASHINGTON
 George, 58
 WATERS
 H. W., 16
 WATKINS
 J. L., 16

WATSON
 A.E., 16
 WEBB
 Jane, 72
 WELLS
 Francis Flournoy, 27
 Rev., 85
 WESTALL
 Thomas, 27
 WESTON
 John M., 9
 WHITE
 Amy Comstock, 27
 Joseph, 27
 R. M., 16
 Reuben, 27
 Walter C., 27
 William C., 27
 WHITESIDES
 Boland, 27
 Henry, 27
 James W., 27
 William B., 27
 WHITING
 Nathaniel, 27
 WHITLOCK
 William, 27
 WIGHTMAN
 Elias D., 27
 WILKINS
 Jane, 27
 WILKS, 16
 WILLIAMS
 Gov. Charles K., 56
 D. C., 16
 George I., 27
 Henry, 27
 J. M., 16
 John, 27
 John Sr., 27
 John R., 27
 Robert H., 27
 Samuel May, 27
 Solomon, 27
 Thomas, 27
 W. D., 16
 WILLIAMSON, 14, 16
 F. M., 16
 WILLIS
 Edward, 63
 Edw., H., 63
 Eola, 63
 Louise H., 63
 Zadie, 63
 WILSON
 B. F., 16
 Bob Edwin, 85
 Charlie Patten, 84, 85
 Edwin E., 85, 86
 Edwin Ethelbert, 84,
 85, 86
 Edwin S., 85
 Emma Jane, 86
 Frances Lillian, 84, 85
 G. H., 86

George Henry, 86
 Helen S., 85
 Helen Smith, 84
 Johnnithan Meigs, 86
 Lilly Frances, 86
 Louisiana C., 86
 M. C. Smith, 84
 Mahala Ewing, 86
 Many Warner, 84, 86
 Marieanna, 85
 Mary Catherine, 86
 N. R., 84, 85, 86
 Nathan R., 84, 85, 86,
 87
 Nathan Richardson,
 83, 85
 Peter, 83, 86
 Sallie Thresa, 85
 Theresa M., 86
 Thresa Meigs Ewing,
 86
 Virginia L., 86
 Warner Leonard, 83,
 85

WOOD
 S., 16
 W. G., 16
 WOODS
 Zadock, 27
 WOODWORTH
 Asaph, 55
 Cassius, 55
 Emma, 55
 Eunice, 55
 George, 55
 Harriet, 55
 Horace, 55
 Lizzie E., 56, 57
 Lois Curtiss, 56, 57
 Lucius, 55, 56, 57
 Lysander, 55
 May, 55
 Mosely, 55
 Norman, 55, 56, 57
 Sophia, 55
 Sydney, 55
 WORRELL
 Polly, 62
 R., 62
 WYATT
 J. J., 16
 M. B., 16

Y
 YOUNG
 J. L., 16

Z
 ZANDERSON, 15
 ZEISS
 W., 16